

Trucost Environmental Data

[Data Guide](#)[Data Item List](#)[Release Notes](#)[Xpressfeed File Format](#)

Trucost data contains information on the environmental impact of different business activities. Trucost metrics assess the risks relating to hundreds of environmental issues, encompassing carbon and other pollutants, water dependency, natural resource efficiency, and waste disposal. Companies, financial institutions, investors, and policy makers use Trucost data to understand their environmental exposure, inform resilience, and identify transformative solutions for a low-carbon, resource-efficient global economy. Trucost data is part of S&P Global Market Intelligence's broader environmental, social, and governance (ESG) initiative.

Trucost is part of S&P Global Market Intelligence. Trucost has been measuring the environmental performance of companies since 2000, providing essential ESG data and analytics to a rapidly growing number of clients. To learn more about Trucost, visit www.trucost.com.

Trucost data consists of raw and calculated values at the company level and sector level. Company-level data includes the company's operational environmental impact and the environmental impact of its upstream supply chain. Sector-level data includes the environmental impact of a Trucost-defined company or business sectors within which the company operates.

Company-level data

- Environmental Data
- Fossil Fuels & Energy Data

Sector-level data

- Sector Fossil Fuels & Energy Data
- Sector Revenue Data

Data coverage

Trucost data contains quantitative information on the direct and supply chain environmental impacts for a universe of over 18,000 companies, representing 95% of global market capitalization, associated with approximately 500 distinct industry sectors across over 100 environmental key performance indicators (KPIs). Information about each company's environmental impact is updated annually using a mix of disclosed and, where gaps are present, modeled data. Historical coverage for small- and mid-cap companies starts from 2016; historical coverage for large-cap companies goes back to 2005.

Trucost's Core Plus universe (which includes its Core universe) consists of companies in the S&P Broad Market Index (BMI) (approximately 11,500 large-, mid-, small- and micro-cap companies); S&P China A SmallCap 300 Index; S&P 500 Index; S&P Global 1200 Index; S&P/TOPIX 150 Index; S&P/TSX Composite Index; S&P/ASX 200 Index; S&P/ASX 300 Index; and other large

listed companies added per client request (approximately 1,500 companies). An additional universe—Cemetery—consists of approximately 1,000 delisted or ‘dead’ companies.

Trucost data can help you:

- Understand your exposure to climate change, natural resource constraints, and broader environmental factors
- Create shareholder value by engaging with companies and investors on ESG factors
- Quantify and price risks in your portfolios
- Assess and manage operational and supplier risks
- Inform green investment and reveal environmental exposure
- Report to stakeholders on environmental risks in your portfolios

Xpressfeed Package Description

Trucost data is organized into the following packages in Xpressfeed:

Company-level data packages

Trucost Period Data (TrucostPeriodData): This package is the foundation of the Trucost company level packages. The package contains the unique company identifier, reported currency, primary sector, fiscal year, and period end date.

Trucost Environmental Data (TrucostEnvironmentalData): This package contains data that helps assess the environmental impact of a company's direct, supply chain and downstream operations. The package includes financial data, greenhouse gas emissions, water usage, quantity of waste generated, land and water pollutants, air pollutants, and natural resources extraction. The package also contains absolute values, intensity relative to revenue, external cost, and external cost as a percentage of revenue for selected data.

Trucost Fossil Fuels and Energy Data (TrucostFossilFuelsandEnergyData): This package contains proven and probable fossil fuel reserves and power generated from various sources of energy. The package also includes greenhouse gas emissions from reserves and generated power, capital expenditure on exploration of fossil fuels, and revenues generated from various forms of coal mining.

Note: The company-level package structure also includes the following sample packages: Trucost Period Data Sample (sample package for the Trucost Period Data package); and Trucost Data Sample (sample package for the Trucost Environmental Data and Trucost Fossil Fuel and Energy Data packages).

Sector-level data packages

Trucost Sector Period Data (TrucostSectorPeriodData): This package is the foundation of the Trucost sector level packages. The package contains the unique company identifier, reported currency, primary sector, sector identifier, fiscal year, and period end date.

Trucost Sector Fossil Fuels and Energy Data (TrucostSectorFossilFuelsandEnergyData): This package contains proven and probable fossil fuel reserves and power generated from various sources of energy for each sector the company is operating in. The package also includes Greenhouse gas emissions from reserves and generated power, capital expenditure on exploration of fossil fuels and revenues generated from various forms of coal mining.

Trucost Sector Revenue Data (TrucostSectorRevenueData): This package contains revenue generated from each sector in which a given company has operations.

Note: The sector-level package structure also includes the following sample packages: Trucost Sector Period Data Sample (sample package for the Trucost Sector Period Data package); and Trucost Sector Data Sample (sample package for the Trucost Sector Fossil Fuels and Energy Data and Trucost Sector Revenue Data packages).

Trucost reference data package

Trucost Reference (TrucostReference): This package contains supporting look-up tables for all the Trucost packages. The package includes a list of data items used in Trucost packages and a list of Trucost sectors.

Related Datasets

Company Cross Reference File

The Company Cross Reference File is delivered to clients who wish to link Trucost data to S&P Capital IQ data or to Compustat data. Two identifier packages are available:

BECRS SNL Identifier Package: To link to S&P Capital IQ data, the BECRS SNL Identifier Package provides cross reference mapping between the SNL *institutionId* (aka MI Id) and the S&P Capital IQ *companyId*. The *companyId* links to the S&P Capital IQ Base Files - Company Foundation File for more descriptive company-level data.

BECRS Compustat GVKEY Identifier Package: For clients who wish to link to Compustat Fundamental data, the BECRS GVKEY Identifier Package provides cross reference mapping between the S&P Capital IQ *companyId* and the Compustat *GVKEY*. To map Trucost data to Compustat data, link the SNL *institutionId* (aka MI Id) to the S&P Capital IQ *companyId* and then link the S&P Capital IQ *companyId* to the Compustat *GVKEY*.

See the *SNL Reference Data User Guide* for more information.

Company Foundation File

The Company Foundation File contains the *companyId* (the S&P Capital IQ unique entity identifier). The Company Foundation File provides descriptors for the entity, such as name, address, country, etc.

See the *S&P Capital IQ Base Files User Guide* for more information on the Company Foundation File.

Xpressfeed Delivery

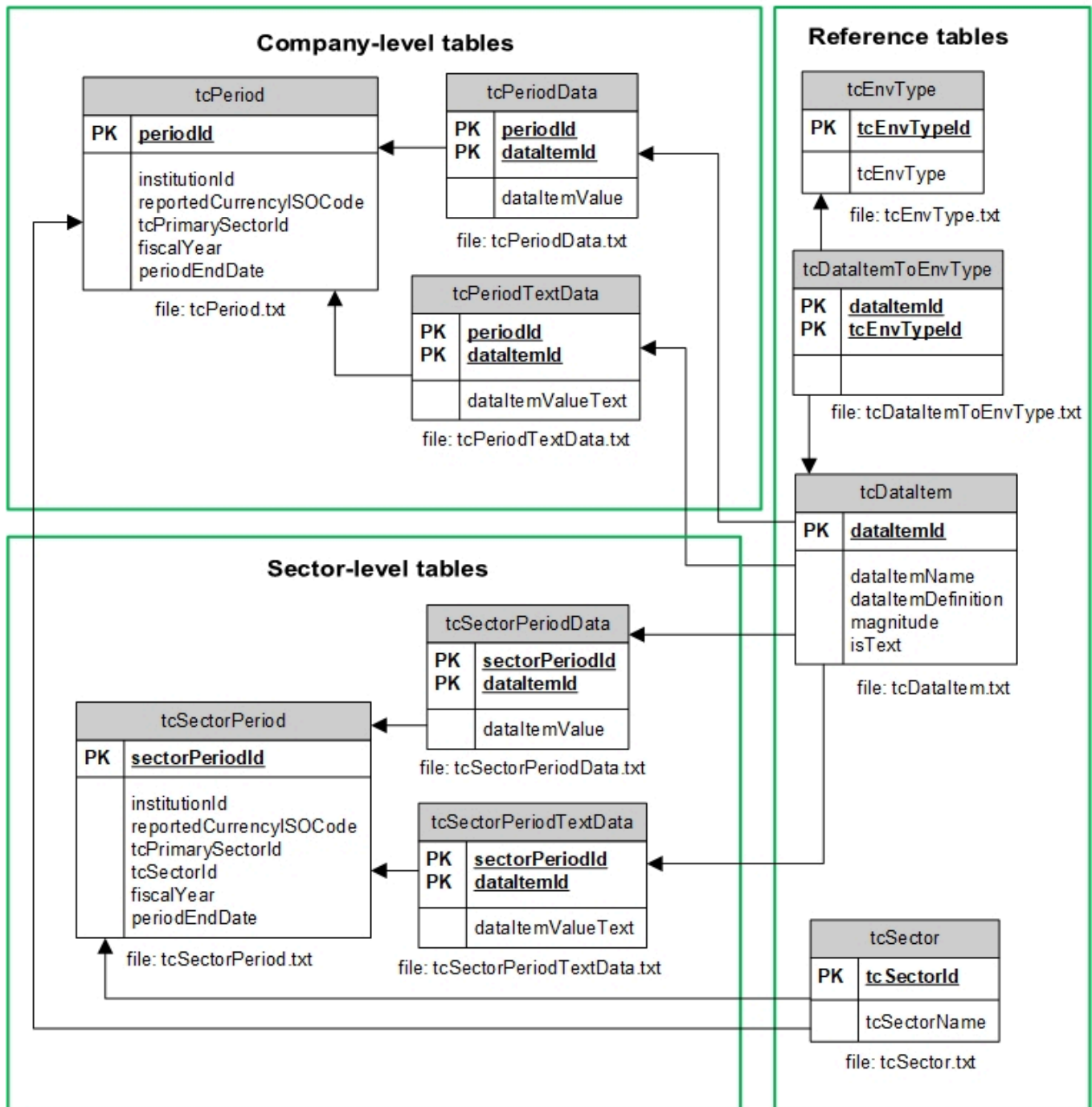
All Trucost data packages are delivered daily. If there are no daily changes, an empty file is still produced. A full data package is available weekly.

For a list of Trucost data packages and the file delivery schedule, please refer to the *Xpressfeed File Delivery Schedule*.

Trucost Environmental Data

Schema diagrams illustrate the Xpressfeed Loader table names and entity relationships in a data package, the.txt file names for FTP clients, and the views in a Snowflake dataset subscription. In Snowflake, views will appear in uppercase. Primary keys (“PK”) are shown in bold font in the schema diagram.

Trucost Environmental Data



SCHEMA FILES

[Trucost Environmental Data](#) (PDF)

Methodology

Methodology guide for Trucost Environmental Data

[Methodology guide](#) (PDF)

Working with the Data

How can I retrieve environmental data for a company?

In the **tcPeriod** table, the *periodId* is the unique identifier for an end-of-period financial record in Trucost. There can be many *periodId* records for one company. Companies are represented in Trucost by a unique identifier, the *institutionId*. This table also contains the *tcPrimarySectorId*, allowing you to link to the sector level data.

To identify the company name and other details for a specific *institutionId*, link to SNL and S&P Capital IQ records using the BECRS SNL Identifier package.

Trucost data values, represented by *dataItemIds*, are found in the **tcPeriodData** (numerical values) and **tcPeriodTextData** table (textual values) for a particular time period.

How can I retrieve sector-level data?

The **tcSectorPeriod** table provides the Trucost *institutionId*, the reported currency code, primary sector ID, and the Trucost sector ID as of a particular time period.

Trucost sector-level data values are found in the **tcSectorPeriodData** (numerical values) and **tcSectorPeriodTextData** table (textual values) for a particular period.

What reference data is available?

The **tcEnvType** table provides reference data for all the environment types for which Trucost data is available.

The **tcDataItem** table provides reference data for Trucost data items.

The **tcDataItemToEnvType** table provides the mapping between Trucost data items and the environment types.

The **tcSector** table provides reference data on industry classification codes, including NAICS.

In addition, the **tcSector** table contains a sector hierarchy which enables you to group Trucost sector business activities:

- Level 3 is the lowest level in the hierarchy
- Level 2 is the middle level in the hierarchy
- Level 1 is the top level in the hierarchy

You can recreate this roll-up by linking the level 3 codes to associated level 2 and 1 codes/names.

For details on how to map Trucost sectors to their business activities, use the **Mapping Sector Categories to Their Industry Segments** spreadsheet under Supporting Documents.

Supporting Documents

Mapping Sector Categories to Their Industry Segments

The document provides details on how to map Trucost sectors to their business activities.

[mapping Trucost sectors](#)

Trucost Data and Linking Examples in Xpressfeed

This paper provides additional insight in understanding various facets of Trucost data and how it can link to other S&P Global datasets.

[Data and linking examples](#)

(PDF)

Overview

The following content is for subscribers of XpressAPI, our modern API delivery solution.

XpressAPI delivers your data as endpoints in a [Swagger interface](#). Swagger Schemas provide definitions and data types for all fields and show the hierarchy (i.e., levels) of the results set.

If you wish to use API developer tools other than Swagger, the [Trucost OpenAPI Specs URL](#) displays a JSON format of the endpoints, operations, parameters, and other pertinent details for the Trucost Environmental dataset.

Green House Gas Data

XpressAPI delivers all data described earlier in this guide. XpressAPI also provides the absolute direct quantities breakout for Green House Gas (GHG) emissions. These quantities form the aggregated GHG Scope 1 emissions.

On a company level, we provide the following details:

- **Damage Issue:** Environmental resource produced or consumed by a company through direct or indirect activities
- **Source:** Trucost source of data. Examples include estimated data, derived from previous year, etc.
- **Direct Quantity:** Quantity of environmental resource emission.
- **Direct External Cost:** Cost of environmental direct and indirect impacts from the company's operations.
- **Impact Ratio:** Total direct and indirect cost as a percent of the company's revenue.

The GHG fields are delivered via **Post** and **Get** endpoints in **Swagger**.

Company Environmental Field Groups

The following describes the dynamic field selection options using the **GET** method in **Swagger** for the **Company Environmental endpoint**.

baseFields (12): The list of fields returned by default

| | | |
|-------------------|-----------------|--------------------------|
| institutionId | institutionName | companyType |
| gicsCode | gicsDescription | primarySectorId |
| primarySectorName | fiscalYear | periodEndDate |
| currencyISOCode | tcTotalRevenue | tcRevenueCalculationAsOf |

Cost (43): Fields associated with the cost of environmental pollutants

| | | |
|-----------------------|-----------------------------|-----------------------|
| tcABSAirDrtCost | tcIRNatResIndrtCost | tcIRGHGDrtNIndrtCost |
| tcIRAirDrtCost | tcABSNatResDrtCost | tcABSWasteDrtCost |
| tcABSAirIndrtCost | tcIRNatResDrtNIndrtCo | tcIRWasteDrtCost |
| tcIRAirIndrtCost | tcABSDrtCost | tcABSWasteIndrtCost |
| tcABSAirDrtNIndrtCost | tcIRDrtCost | tcIRWasteIndrtCost |
| tcIRAirDrtNIndrtCost | tcABSDrtNIndrtCost | tcABSWasteDrtNIndrtCo |
| tcABSLWPDrtCost | tcIRDrtNIndrtCost | tcIRWasteDrtNIndrtCos |
| tcIRLWPDrtCost | tcABSIndrtCost | tcABSWaterDrtCost |
| tcABSLWPIndrtCost | tcIRIndrtCost | tcIRWaterDrtCost |
| tcIRLWPIndrtCost | tcEnvironmentalCostCalcAsOf | tcABSWaterIndrtCost |
| tcABSLWPDrtNIndrtCost | tcABSGHGDrtCost | tcIRWaterIndrtCost |
| tcIRLWPDrtNIndrtCost | tcIRGHGDrtCost | tcABSWaterDrtNIndrtCo |

| | | |
|------------------------|-----------------------|-----------------------|
| tcABSNatRDrtNIndrtCost | tcABSGHGIndrtCost | tcIRWaterDrtNIndrtCos |
| tcIRNatResDrtCost | tcIRGHGIndrtCost | |
| tcABSNatResIndrtCost | tcABSGHGDrtNIndrtCost | |

GHG (28): Fields associated with Green House Gas (GHG) emissions of environmental pollutants

| | | |
|--------------------------|------------------------|-----------------------------|
| tcIntensityCarbonDirect | tcABSCrbnScope2 | tcCrbnScope3DisclosureDown |
| tcIntCrbnDrtAndT1Indirec | tcABSCrbnScope3 | tcAbsCrbnScope3Downstream |
| tcIntCrbnT1Indrt | tcCrbnWeighted | tcIntCrbnScope3Downstream |
| tcIntCrbnScope1 | tcCrbnScope1Disclosure | tcCrbnScope3DwnstrmCalcAsOf |
| tcIntCrbnScope2 | tcABSGHGDrtCost | tcCrbnScope2Disclosure |
| tcIntCrbnScope3 | tcIRGHGDrtCost | tcCrbnScope3AirDisclosure |
| tcABSCrbnDrt | tcABSGHGIndrtCost | tcCrbnScope3RailDisclosure |
| tcABSCrbnDrtAndT1Indirec | tcIRGHGIndrtCost | tcCrbnScope3TruckDisclosure |
| tcABSCrbnT1Indrt | tcABSGHGDrtNIndrtCost | |
| tcABSCrbnScope1 | tcIRGHGDrtNIndrtCost | |

waste (34): Fields associated with waste environmental pollutants

| | | |
|------------------------|-------------------------|-----------------------------|
| tcIntWasteIncineration | tcABSWasteDrtNIndrtCo | tcABSIncinerateDirIndir |
| tcIntWasteLandfill | tcIRWasteDrtNIndrtCos | tcABSWasteDrtIndrt |
| tcIntWasteNuclear | tcWasteWeighted | tcABSWMiningTailingsDrt |
| tcIntWasteRecycled | tcIntWasteLandfillIndrt | tcABSWMiningOverBurdenDir |
| tcABSWasteDrtCost | tcIntWLandfillDrtIndir | tcWasteLandfillHDDisclosure |

| | | |
|------------------------|---------------------------|------------------------------|
| tcIRWasteDrtCost | tcIntWIncinerationIndrt | tcWasteLandfillNHDDisclosure |
| tcABSWasteIncineration | tcIntWIncinerateDrtInd | tcWasteInciHDDisclosure |
| tcABSWasteIndrtCost | tcIntWasteDrtandIndrt | tcWasteInciNHDDisclosure |
| tcIRWasteIndrtCost | tcABSWasteLandfillIndrt | tcWasteNuclearDisclosure |
| tcABSWasteLandfill | tcABSWLandfillDrtIndir | tcWasteRecycledHDDisclosure |
| tcABSWasteNuclear | tcABSWasteIncinerateIndrt | tcWasteRecycledNHDDisclosure |
| tcABSWasteRecycled | | |

water (24): Fields associated with water environmental pollutants

| | | |
|---------------------------|---------------------------|----------------------------|
| tcIntWaterDrtCooling | tcABSWaterDrtAndPurchased | tcABSWaterIndrtProcess |
| tcIntWaterDrtProcess | tcABSWaterIndrtCost | tcABSWaterDrtNIndrt |
| tcIntWaterDrtAndPurchased | tcIRWaterIndrtCost | tcIntWaterIndrtCooling |
| tcIntWaterPurchased | tcABSWaterPurchased | tcIntWaterIndrtProcess |
| tcABSWaterDrtCost | tcABSWaterDrtNIndrtCo | tcIntWaterDrtNIndrt |
| tcABSWaterDrtCooling | tcIRWaterDrtNIndrtCos | tcWaterDrtCoolDisclosure |
| tcIRWaterDrtCost | tcWaterWeighted | tcWaterPurchasedDisclosure |
| tcABSWaterDrtProcess | tcABSWaterIndrtCooling | tcWaterDrtProcesDisclosure |

Company Fossil Fuels and Energy Field Groups

The following describes the dynamic field selection options using the **GET** method in Swagger for the **Company Fossil Fuels and Energy endpoint**.

baseFields (10): The list of fields returned by default

| | | |
|-------------------|-----------------|-----------------|
| institutionId | institutionName | companyType |
| gicsCode | gicsDescription | primarySectorId |
| primarySectorName | fiscalYear | periodEndDate |
| currencyISOCode | | |

coal (31): Fields associated with coal extractions and power generation

| | | |
|----------------------------|--------------------------------|-----------------------------|
| tcBitmnsLigniteCoalRevPct | tcGenerationCoal | tcCoalMiningRevenuePct |
| tcBitmnsLigniteCoalRev | tcGenerationCoalGHG | tcCoalMiningRevenue |
| tcBitmnsUndrgrndCoalRevPct | tcCoalPowerGenSecRevPct | tcMetallurgCoalMinRevPct |
| tcBitmnsUndrgrndCoalMinRev | tcCoalPowerGenSectorRev | tcMetallurgCoalMiningRev |
| tcCapExCoal | tcProvenReserveMetallurgCoal | tcOtherCoalMiningRevPct |
| tcCoalExtractionDeepMined | tcProvenReserveCoal | tcOtherCoalMiningRevenue |
| tcCoalExtractionOpenCast | tcProvenReserveThermalCoal | tcThermalCoalMiningRevPct |
| tcCoalExtractionOther | tcProbableReserveMetallurgCoal | tcThermalCoalMiningRevenue |
| tcCoalMiningMethodology | tcProbableReserveCoal | tcCoalMiningCalculationAsOf |
| tcCoalMiningDataSrc | tcProbableReserveThermCoal | |
| tcCoalPowerGenerationPct | tcReserveCO2EmsnFromCoal | |

extractions (46): Fields associated with fossil fuel exploration, mining and reserves

| | | |
|------------------------------|--------------------------------|-------------------------------|
| tcBitmnsLigniteCoalRevPct | tcProvenReserveNaturalGas | tcReserveCO2EmsnFromOil |
| tcBitmnsLigniteCoalRev | tcProvenReserveOilAndGas | tcReserveCO2EmsnFromOilAndGas |
| tcBitmnsUndrgrndCoalRevPct | tcProvenReserveCoal | tcReserveTotalEmissions |
| tcBitmnsUndrgrndCoalMinRev | tcProvenReserveShaleGas | tcCoalMiningRevenuePct |
| tcCapExCoal | tcProvenReserveThermalCoal | tcCoalMiningRevenue |
| tcCapExGas | tcProvenReserveUnconvOil | tcCompanyReserveDataSrc |
| tcCapExOilGas | tcProbableReserveConvOil | tcMetallurgCoalMinRevPct |
| tcCapExOil | tcProbableReserveMetallurgCoal | tcMetallurgCoalMiningRev |
| tcCapExOtherExploration | tcProbableReserveNaturalGas | tcOtherCoalMiningRevPct |
| tcCoalExtractionDeepMined | tcProbableReserveOilAndGas | tcOtherCoalMiningRevenue |
| tcCoalExtractionOpenCast | tcProbableReserveCoal | tcThermalCoalMiningRevPct |
| tcCoalExtractionOther | tcProbableReserveShaleGas | tcThermalCoalMiningRevenue |
| tcCoalMiningMethodology | tcProbableReserveThermCoal | tcFossilFuelEnergyCalcAsOf |
| tcCoalMiningDataSrc | tcProbableReserveUnconvOil | tcCoalMiningCalculationAsOf |
| tcProvenReserveConvOil | tcReserveCO2EmsnFromCoal | |
| tcProvenReserveMetallurgCoal | tcReserveCO2EmsnFromGas | |

powerGeneration (24): Fields associated with fossil fuel power generation

| | | |
|--------------------------|-------------------------|--------------------|
| tcGenerationBiomass | tcGenerationLandfillGas | tcGenerationOther |
| tcCoalPowerGenerationPct | tcGenerationLNG | tcGenerationOil |
| tcGenerationCoal | tcGenerationLNGGHG | tcGenerationOilGHG |
| | | |

| | | |
|---------------------------|---------------------------|--------------------------|
| tcGenerationCoalGHG | tcGenerationLPG | tcCompanyPowerGenDataSrc |
| tcCoalPowerGenSecRevPct | tcGenerationLPGGHG | tcTotalFossilFuelGHG |
| tcCoalPowerGenSectorRev | tcGenerationNaturalGas | tcGenerationSolar |
| tcGenerationGeothermal | tcGenerationNaturalGasGHG | tcGenerationWaveTidal |
| tcGenerationHydroelectric | tcGenerationNuclear | tcGenerationWind |

Sector Fossil Fuels and Energy Field Groups

The following describes the dynamic field selection options using the **GET** method in Swagger for the **Sector Fossil Fuels and Energy endpoint**.

baseFields (12) – The list of fields returned by default

| | | |
|-------------------|-----------------|-----------------|
| institutionId | institutionName | companyType |
| gicsCode | gicsDescription | primarySectorId |
| primarySectorName | fiscalYear | periodEndDate |
| currencyISOCode | sectorId | sectorName |

extractions (22): Fields associated with proven and probable fossil fuel reserves

| | | |
|--------------------------------|--------------------------------|-------------------------------|
| tcProvenReserveConvOil | tcProbableReserveConvOil | tcReserveCO2EmsnFromCoal |
| tcProvenReserveMetallurgicalCo | tcProbableReserveMetallurgical | tcReserveCO2EmsnFromGas |
| tcProvenReserveNaturalGas | tcProbableReserveNaturalGas | tcReserveCO2EmsnFromOil |
| tcProvenReserveOilAndGas | tcProbableReserveOilAndGas | tcReserveCO2EmsnFromOilAndGas |
| tcProvenReserveCoal | tcProbableReserveCoal | tcReserveTotalEmissions |
| tcProvenReserveShaleGas | tcProbableReserveShaleGas | tcReservesDataSource |
| tcProvenReserveThermalCoal | tcProbableReserveThermalCoal | |
| tcProvenReserveUnconvOil | tcProbableReserveUnconvOil | |

powerGeneration (21): Fields associated with fossil fuel power generation

| | | |
|---------------------|--------------------|----------------------|
| tcGenerationBiomass | tcGenerationLNGGHG | tcGenerationOil |
| tcGenerationCoal | tcGenerationLPG | tcGenerationOilGHG |
| tcGenerationCoalGHG | tcGenerationLPGGHG | tcTotalFossilFuelGHG |
| | | |

| | | |
|---------------------------|---------------------------|------------------------|
| tcGenerationGeothermal | tcGenerationNaturalGas | tcGenerationSolar |
| tcGenerationHydroelectric | tcGenerationNaturalGasGHG | tcGenerationWaveTidal |
| tcGenerationLandfillGas | tcGenerationNuclear | tcGenerationWind |
| tcGenerationLNG | tcGenerationOther | tcGenerationDataSource |

Revision History

Revision

| Version | Date | Changes |
|---------|------------|--|
| 2.5 | 03/27/2024 | <p>Implemented the following enhancements:</p> <ul style="list-style-type: none"> • Added 25 new <i>dataitemIds</i>: 376014, 376883, 376884, 376886, 377148, 377149, 377405, 377406, 377407, 377408, 377409, 377758, 377759, 377760, 377763, 377764, 377765, 377766, 377767, 377768, 377790, 377849, 377850, 377851, and 377852 • Added a flag to indicate whether an environmental profile is Fully Modeled ('0') and Fully Researched ('1'). |
| 2.4 | 11/20/2023 | Published an updated Data Item List |
| 2.3 | 08/03/2023 | <p>Implemented the following enhancements and changes:</p> <ul style="list-style-type: none"> • Added three Scope 2 <i>dataitemIds</i>: 367750, 368314, and 368702 • Added 25 Scope 3 <i>dataitemIds</i>: 368652, 368653, 368654, 368655, 368704, 368705, 368706, 368707, 368739, 368740, 368742, 368741, 368754, 368755, 368756, 368757, 368730, 368735, 368736, 368737, 368746, 368747, 368748, 368749, and 368758 • Changed name and definition to six <i>dataitemIds</i>: 319414, 319408, 329689, 326737, 326738, and 326730 |
| 2.2 | 02/09/2023 | Implemented name changes to the following <i>dataitemIds</i> : 319522, 326730, 329688, 329692, 329693, 329694, 319453, 319454, 319458, 319457, 319456, 319460. |
| 2.1 | 12/08/2022 | <p>Implemented changes to nine <i>dataitemIds</i> including:</p> <ul style="list-style-type: none"> • Data item name changes: 319413, 319414, 319415, and 319416 • Data item definition changes: 319551, 323617, 323618, and 324389 • Data item name and data item definition changes: 323616 |
| 2.0 | 09/30/2022 | Re-assigned <i>dataitemId</i> 319404 (Intensity: GHG Direct) from <i>tcEnvType</i> 2 (Trucost Fossil Fuels and Energy Data) to <i>tcEnvType</i> 1 (Trucost Environmental Data). |
| 1.9 | 02/04/2022 | Added content for Green House Gas (GHG) Breakout Data available on XpressAPI. |
| 1.8 | 06/17/2021 | Removed tcCoalGasification and tcCoalLiquefaction from XpressAPI coal and extraction field groups. |
| 1.7 | 06/15/2021 | Updated XpressAPI section |
| 1.6 | 06/02/2021 | Added section for XpressAPI |

| Version | Date | Changes |
|---------|------------|--|
| 1.5 | 10/21/2020 | Adjusted the <i>dataItemDefinition</i> for the following <i>dataItemIds</i> : <ul style="list-style-type: none"> • 319482 • 319483 • 319498 • 319499 Generated new results for sample query #1. Updated sample queries #2 and #3 and generated new results. |
| 1.4 | 10/09/2020 | Packages and Populations > Company-level data packages Updated the description for the Trucost Environmental Data (TrucostEnvironmentalData) package. Added three new sample queries: <ul style="list-style-type: none"> • <i>Identify all the data items delivered in the Trucost Environmental packages</i> • <i>Identify numeric environmental data for American Electric Power Company, Inc., for the year 2018</i> • <i>Identify textual environmental data for American Electric Power Company, Inc., for the year 2018</i> |
| 1.3 | 09/28/2020 | Added two new sample queries: <ul style="list-style-type: none"> • <i>Identify Sector Revenue/Total Revenue</i> • <i>Identify carbon intensity as company GHG emissions divided by company power generation</i> |
| 1.2 | 04/23/2020 | Updated the description for <i>reportedCurrency/ISOCode</i> in the tcPeriod (tcPeriod.txt) and tcSectorPeriod (tcSectorPeriod.txt) tables to indicate that currency values are currently reported in USD. Updated the copyright page. |
| | 05/01/2020 | Added information indicating the tcSector table contains a sector hierarchy which enables users to group Trucost sector business activities. A link to the spreadsheet with details on the mapping of Trucost sectors to their business activities was also provided. |
| | 06/01/2020 | Adjusted the description for the Trucost Environmental Data (TrucostEnvironmentalData) package. |
| 1.1 | 07/10/2019 | Updated schema to show the following relationships: tcSectorPeriodData table to tcDataItem table tcSectorPeriodTextData table to tcDataItem table |
| 1.0 | 07/09/2019 | Initial version |